

RAUCH MANUFACTURING, INC.

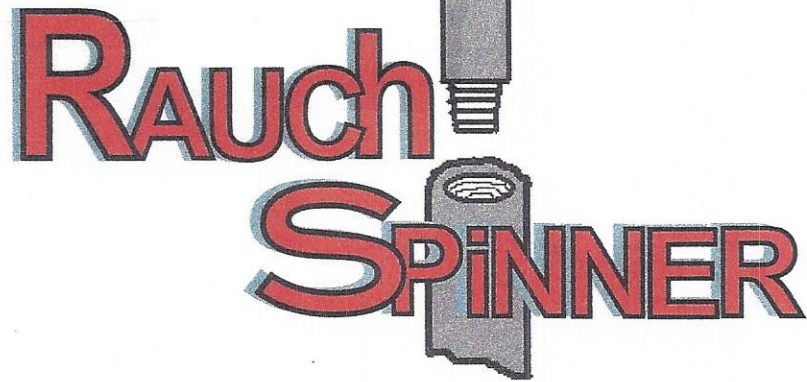
2547 W. Success Way

Emmett, Idaho 83617

RAUCHMFG@OUTLOOK.COM

208-365-3492

208-365-3792 Fax



512B Manual / Instructions



Does the job easier,
safer and faster
maximizing efficiency on
all your jobs

WWW.RAUCHMFG.COM

RAUCHMFG@OUTLOOK.COM

Cover.....	1
Index.....	2
Getting Started.....	3
Safety Guidelines.....	4
Specifications.....	5
Installation (Canister).....	6
Installation (Tool).....	7
Operation.....	8
Pipe Size Adjustment.....	9
Schematics.....	10
Replacement Parts.....	11
Maintenance.....	12
Ordering / Warranty.....	13
Contact Information.....	14

Getting Started:



Please check the contents of your package to insure you received all items.

Contents should include:

- Rauch Model 512B Spinner
- Single Cross Valve
- Spinner Counterweight
- 2 - 14' Cables with Clamps
- Owners Manual Packet

It is important to document the serial number of this tool for future reference.

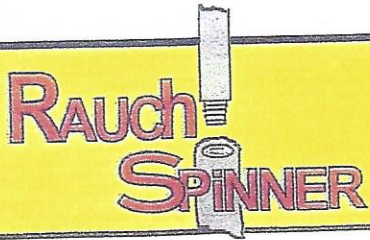
Serial # _____

If an item is missing from your package, contact:

Rauch Manufacturing, Inc.

208-365-3492

RAUCHMFG@OUTLOOK.COM



Safety Guidelines

SAFETY PRECAUTIONS FOR THE RAUCH SPINNER

WARNING: FAILURE TO FOLLOW THESE RULES MAY RESULT IN SERIOUS PERSONAL INJURY.

As with all machinery there are certain hazards involved with the operation and use of the Rauch Spinner. Using the Spinner with caution and respect will considerably lessen the possibility of personal injury.

However, if normal safety precautions are overlooked or ignored, personal injury to the operator and bystanders may result.

This machine was designed for certain applications only. Rauch Manufacturing, Inc. strongly recommends that this machine NOT be modified and/or used for any application other than for which it was designed. If you have any questions relative to its application, DO NOT use the machine until after you contact Rauch Mfg. and have received instruction and advice.

Rauch Manufacturing, Inc.

2547 W. Success Way

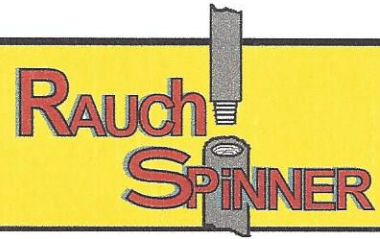
Emmett, Idaho 83617

208-365-3492* 208-365-3792 (fax)

RAUCHMFG@OUTLOOK.COM

1. DO NOT operate while under the influence of drugs, alcohol or medication.
2. STAY ALERT. Watch what you are doing. Use common sense. Do not operate tool when you are tired.
3. KEEP WORK AREA CLEAN. Cluttered and slick areas invite accidents.
4. KNOW THE TOOL. Learn its applications and limitations as well as potential hazards related to this tool.
5. WARNING. The use of other accessories not specifically related to this tool may create a hazard.
6. DO NOT ALTER OR MISUSE TOOL. Alteration or modification not specified is misuse and may result in a dangerous condition.
7. MAINTAIN TOOL.
8. WARNING: KEEP HANDS, FEET, HAIR, CLOTHING AND JEWELRY AWAY FROM ANY MOVING PARTS ON THE RAUCH SPINNER.
9. AVOID BACK INJURY. Lift properly.
10. NEVER STAND ON TOOL. Serious injury could occur.
11. Do not operate tool without all safety guards in place.

Specifications



Model #	Pipe Size Range (INCHES)	Torque (FT-LBS)	Tool Size (INCHES)	Weight	AIR	PSI
41B	7/8 - 4"	2000	23 x 19	340 lbs	90-150 PSI	1000-3000
512B	2 3/8 - 7 1/2"	2000	23 x 19	340 lbs	90-150 PSI	1000-3000
41H	1 - 4 1/2"	2000	32 x 21	450 lbs	n/a	1000-3000
512H	2 3/8 - 9"	2000	40 x 25	486 lbs	n/a	1000-3000
512HX	2 3/8 - 11"	2000	40 x 25	486 lbs	n/a	1000-3000
517	5 - 20"	4000	42 x 44 x 34	810 lbs	60-240 cfm	1000-3000
112H	1 1/2 - 12"	1100-2200	24 x 47 x 24	708 lbs	n/a	1000-3000
112A	1 1/2 - 12"	1100-2200	32 x 37 x 40	850 lbs	60-240 cfm	1000-3000

***** Hydraulic Flow to all tools is 2 - 20 GPM.**

***** Air Pressure 90 - 150 PSI.**

Installing the Rauch Spinner can be done one of two ways:

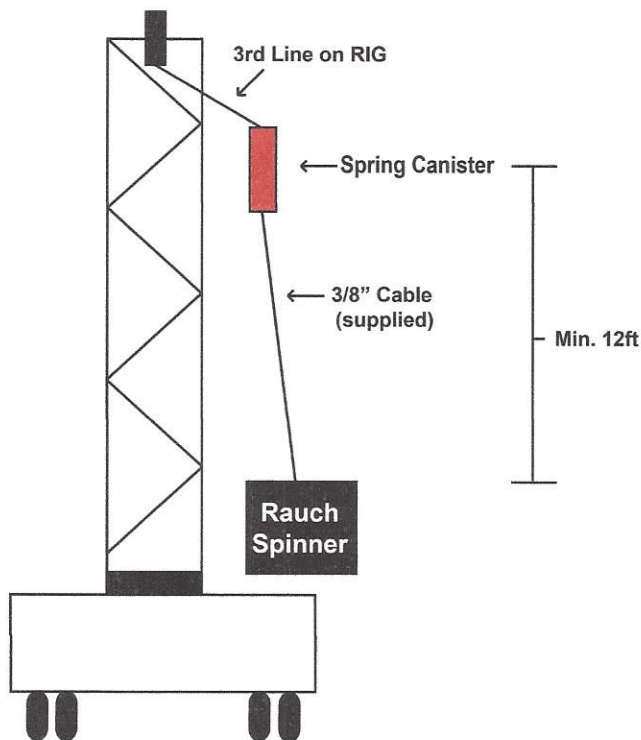
1. Hang the Spinner and Spring Canister by a 3rd line on the rig.

OR

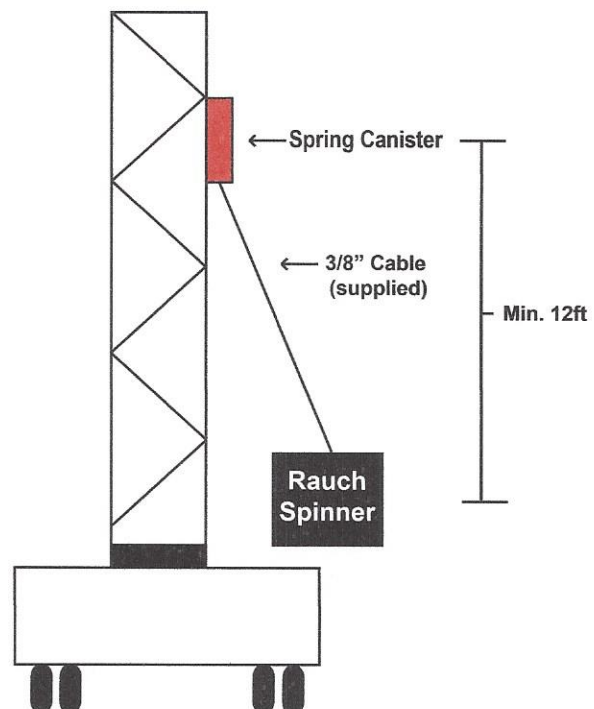
2. Weld the Spring Canister directly to the mast.

When installing the Rauch Spinner by welding to the mast you should place the canister as high on the mast as possible with a minimum distance of 12ft from the bottom of the Spring Canister to the rotating table. It should not be mounted any further away than 5ft horizontally from the center of the table. Installing the Spinner should be done with the supplied 3/8" cable. *No cable smaller than 3/8" should be used.*

Option 1



Option 2



Installation

1. Be sure the Spring Canister is mounted on the cable that the Rauch Spinner is hanging from in order to allow the tool to move up and down with ease.
2. Make sure all cables and hoses are properly tightened before using the Rauch Spinner.
3. Make sure hydraulic return and feed hoses are the same size.
4. Make sure hydraulic oil is filtered going into the tool to prevent damage to the hydraulic motor.
5. Recommended hydraulic flow is 16-20 gpm or 2500 psi. Do not exceed 3000 psi on the motor or 23 gallons per minute.
6. Recommended Air Pressure is 120 to 140 psi with desirable pressure at 140 - 140 psi. Do not go exceed 150 psi on the Air Cylinder.
7. Have hydraulics turned off before disconnecting.
8. Don't force the tool. It will do the job better and safer at the rate for which it was designed.
9. Turn off the machine if the tool is to be backed out of an uncompleted or jammed operation.
10. Never leave tool running unattended. Turn off. Don't leave tool until it comes to a complete stop.
11. Disconnect machine from power source when making repairs.

12. **BEFORE EACH USE:**

INSPECT ALIGNMENT OF MOVING PARTS

INSPECT BINDING OF MOVING PARTS

CHECK FOR BROKEN OR DAMAGED PARTS

MAKE SURE ALL WASHERS, NUTS, CABLE & HOSE CONNECTIONS ARE TIGHT

MAKE SURE NO PARTS HAVE EXCESSIVE PLAY

IF ANY PART IS MISSING, BENT OR BROKEN OR NOT WORKING PROPERLY,

TURN TOOL OFF!!! REPLACE DAMAGED PARTS BEFORE USING TOOL!!!

BEFORE ACTIVATING THE POWER ARM, BE SURE THE SPINNER IS ALL THE WAY FORWARD ON THE DRILL PIPE TO PREVENT EJECTING THE PIPE!!!



Operation

Before each use:

- inspect alignment of moving parts
- inspect binding of moving parts
- check for broken or damaged parts
- make sure all washers, nuts, cable connections and hose connections are tight.
- make sure no parts have excessive play.
- if any part is missing, bent, or broken in any way, or not working properly, **TURN TOOL OFF.** Replace damaged, missing or failed parts before using the tool again.

1. Be sure the spring canister is mounted on the cable that the Rauch Spinner is hanging from to allow the tool to move up and down with ease.
2. Make sure all cables and hoses are properly tightened before using the Rauch Spinner.
3. Make sure hydraulic return and feed hoses are the same size.
4. Make sure hydraulic oil is filtered going into the tool to prevent damage to the hydraulic motor.
5. When putting the Spinner Tool on the pipe, make sure the tool is all the way on the drill pipe before actuating the air valve.
6. Recommended hydraulic flow is 16-20 gpm or 2500 psi. Do not exceed 3000 psi on the motor or 23 gallons per minute.
7. Recommended Air Pressure is 120 to 140 psi with desirable pressure at 140-150 psi. Do not go over 150 psi on the Air Cylinder.
8. Have hydraulics turned off before disconnecting.
9. Don't force the tool. It will do the job better and safer at the rate for which it was designed.
10. Turn off the machine if the tool is to be backed out of an uncompleted or jammed operation.
11. Never leave tool running unattended. Turn off. Don't leave tool until it comes to a complete stop.
- 8 12. Disconnect machine from power source when making repairs.

Pipe Size Adjustment



1. To adjust, remove the 3/4" bolt on the clevis. Twist the clevis in or out to adjust the power arm for larger or smaller pipe. Replace the 3/4" bolt on the clevis and tighten it.

NOTE: For proper adjustment, there should be 3/8" to 1/4" distance between the Spinners smooth roller and the pipe.

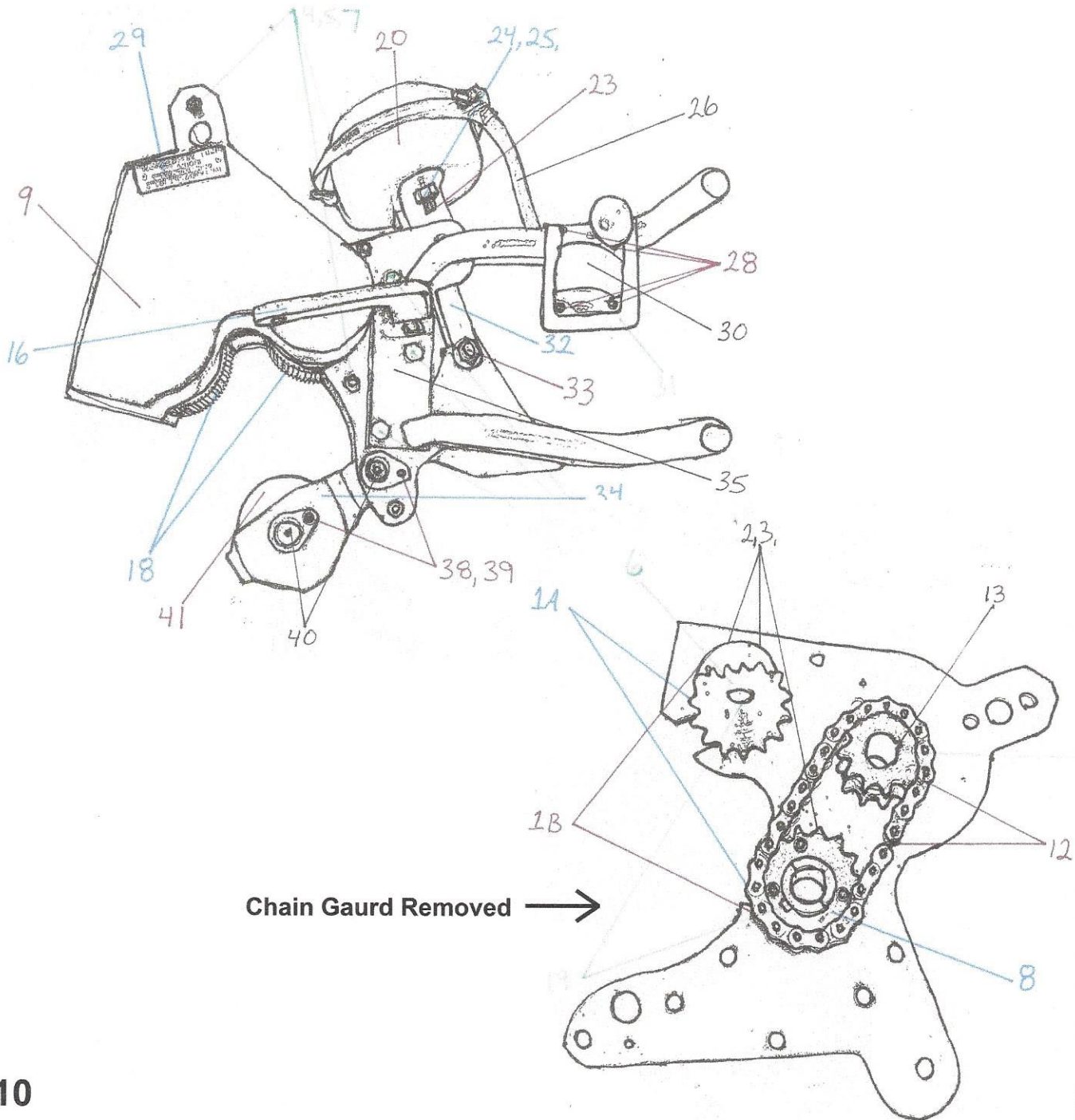
2. For larger diameter pipe, remove the 3/4" bolt on the clevis and swing the power arm out and place the clevis/bolt in the outside hole on the power arm. Be sure to adjust the clevis for the right diameter pipe.
3. Grease zerk on power arm twice a day!

Schematic

RAUCH
SPINNER

Model 512B

(For use with page # 13 - Replacement Parts)



Replacement Parts



#	ITEM	Qty	#	ITEM	Qty
1A	512B - BEARING	4	25	512B - 5/8" Lock Nut	1
1B	512B - FLANGES (Sold by the pair)	4	26	512B - 3/8" x 18" Hose	1
2	512B - 3/8" x 5/8" Bolts	12	27	512B - 3/8" x 1/4" Connector	4
3	512B - 3/8" Lock Washer	12	28	512B - 1/4" x 3/4" Allen Bolt	9
4	512B - 1/2" x 4 1/2" Bolt	6	29	512B - 1/4" Washer	1
5	512B - 1/2" Pipe Spacer	6	30	512B - Rexroth Valve	1
7	512B - 1/2" Lock Nut	9	31	512B - Air Valve Bracket	1
8	512B - H60 Sprocket - RevMnt w/hub	1	32	512B - Clevis	3
9	512B - Chain Gaurd	1	33	512B - 1/2" x 2" Bolt	3
10	512B - 1/4" Lock Washer	5	34	512B - Power Arm	1
11	512B - 1/4" x 1/2" Allen Bolt	5	35	512B - Handle Bar Bracket	3
12	512B - 60 Chain w/Link	2	36	512B - 9/16" x 1" Washer	3
13	512B - 5/16" x 1 1/4" Key	1	37	512B - 9/16" Washer	1
14	512B - 60 Sprocket - Double Motor	1	38	512B - 5/16" x 3/4" Bolt	1
15	512B - Eaton Motor	1	39	512B - 5/16" Lock Washer	2
16	512B - Hanger Bracket	2	40	512B - Tear Drop Pin w/Zerk	2
17	512B - 1/2" x 1 1/2" Motor Bolt	2	41	512B - Small Smooth Roller	1
18	512B - Small Power Roller	2			
19	512B - 1/4" x 1 1/4" Key	1			
20	512B - Airpot	1			
21	512B - 3/8" Hose Connector Elbow	1			
22	512B - 3/8" Hose Connector Fitting	2			
23	512B - Airpot Brackets	2			
24	512B - 5/8" x 1 1/2" Bolt	2			11

Maintenance



Before each use:

INSPECT ALIGNMENT OF MOVING PARTS
INSPECT BINDING OF MOVING PARTS
CHECK FOR BROKEN OR DAMAGED PARTS
MAKE SURE ALL WASHERS, NUTS, CABLE & HOSE CONNECTIONS ARE TIGHT
MAKE SURE NO PARTS HAVE EXCESSIVE PLAY

BEFORE ACTIVATING THE POWER ARM, BE SURE THE SPINNER IS ALL THE WAY FORWARD ON THE DRILL PIPE TO PREVENT EJECTING THE PIPE!!!

2. Disconnect Spinner from power source when making repairs.
3. Periodically pull the bottom guard off check and check the six 1/4" bolts on the taper lock sprockets. (the 1/4" bolts should have 10lbs. torque). Also check the bolt on the double sprocket on the motor. *NOTE: There should be a little slack in the chains.*
4. Check tightness of all bolts every 40 hours of operation.
5. Grease zerk on power arm twice a day during operation.



Ordering / Warranty

- Please have the Model # of your Spinner when calling to order parts of replacement tools.
- Please refer to the REPLACEMENT PARTS LIST on page 13.
- CALL our Parts Department at : 208-365-3492
- FAX ORDERS to 208-365-3792
- EMAIL ORDERS to RAUCHMFG@OUTLOOK.COM

Rauch Manufacturing, Inc. warrants the Rauch Spinner for workmanship and materials for one year.

Note: Adherence to the specifications and safety precautions set forth in this manual will increase the efficiency and life of the equipment and prevent bodily injury.